

CENTER FOR EXCELLENCE in the
NEUROSCIENCES

SEMINAR SERIES

An unexpected journey: the tale of a basic scientist in the world of osteopathic research

Lisa M. Hodge, Ph.D.
Associate Professor,
 Department of Cell Biology and Immunology
Osteopathic Heritage Basic Science Research Chair
 The Osteopathic Research Center
University of North Texas Health Science Center
 Fort Worth, Texas

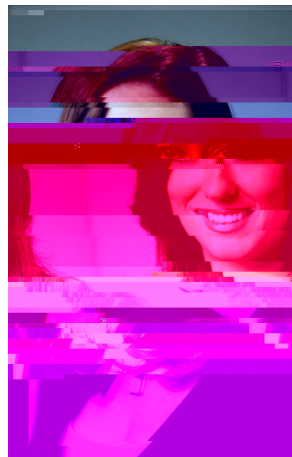
Thursday, June 25th 2015
 12:00-1:00 p.m.

St. Francis
 UNE, Biddeford Campus

L c b

Hosted by: Geoff Bove, D.C., Ph.D.

Sponsored by: C E N
 COM B m D m



Dr. Lisa Hodge
 Ph.D.
 Associate Professor
 Department of Cell Biology and Immunology
 Osteopathic Heritage Basic Science Research Chair
 The Osteopathic Research Center
 University of North Texas Health Science Center
 Fort Worth, Texas